

# In the Footsteps of Petrie: Figures 1-5

New Investigations in the Naqada Region, 2018 – 2022

These maps accompany pp 16-18 of the PMF magazine distributed in December 2023.

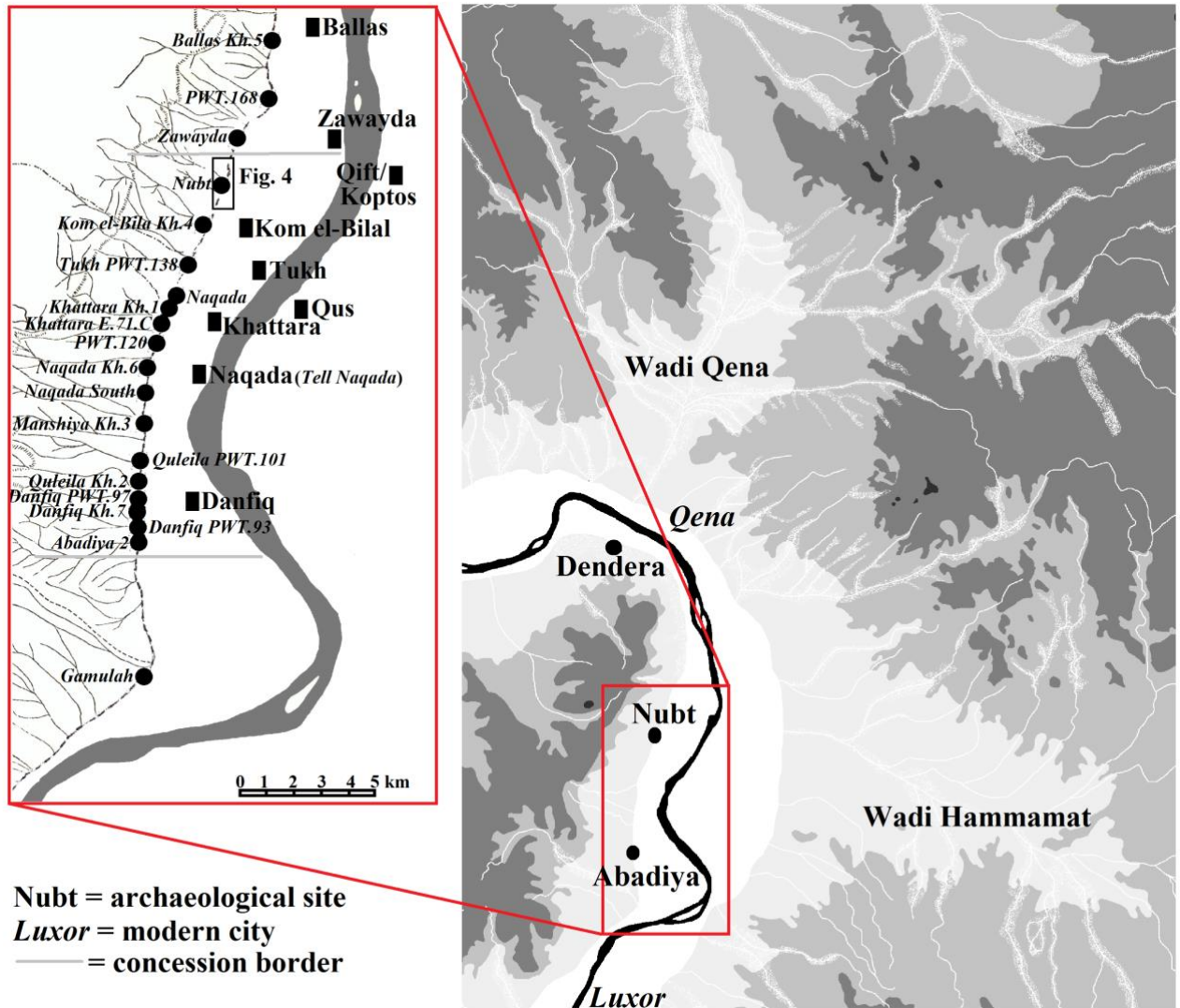
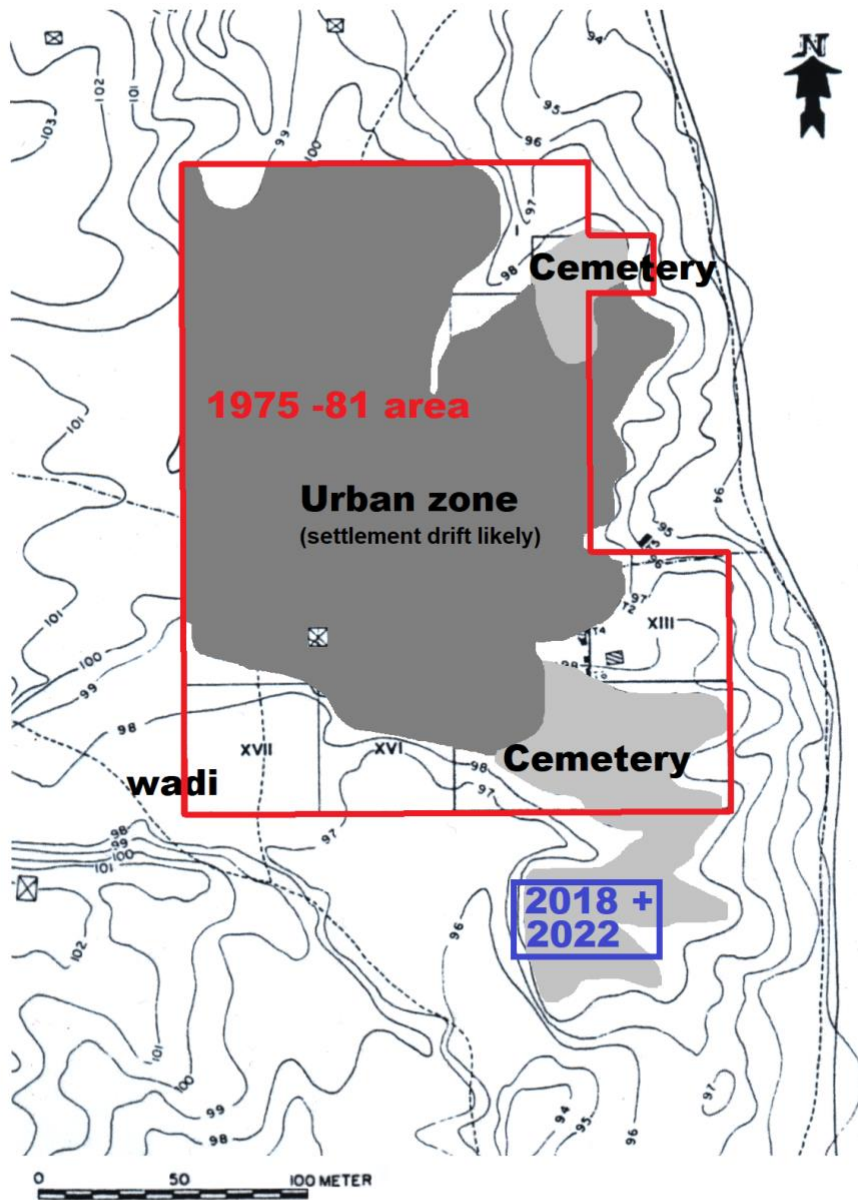
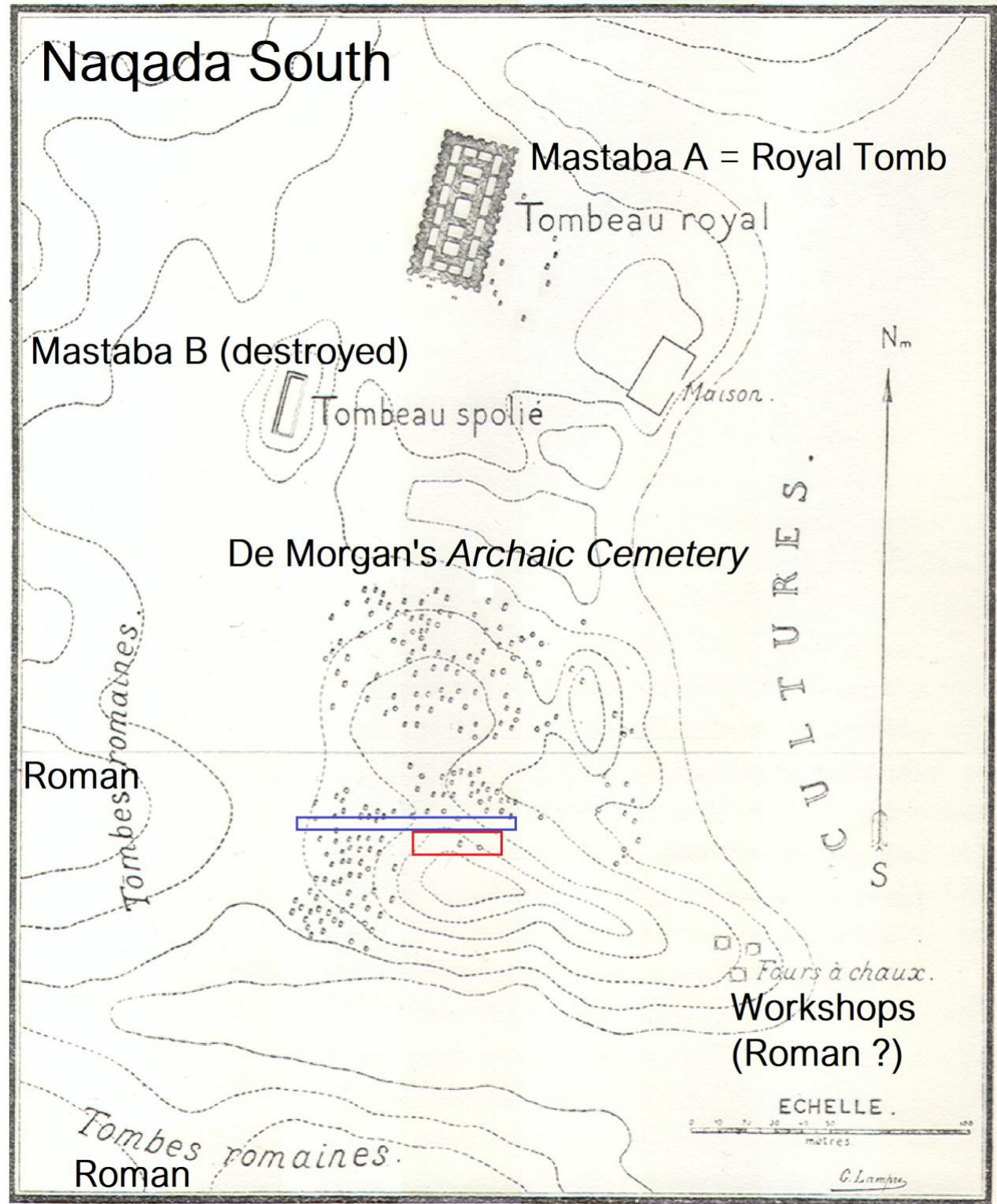


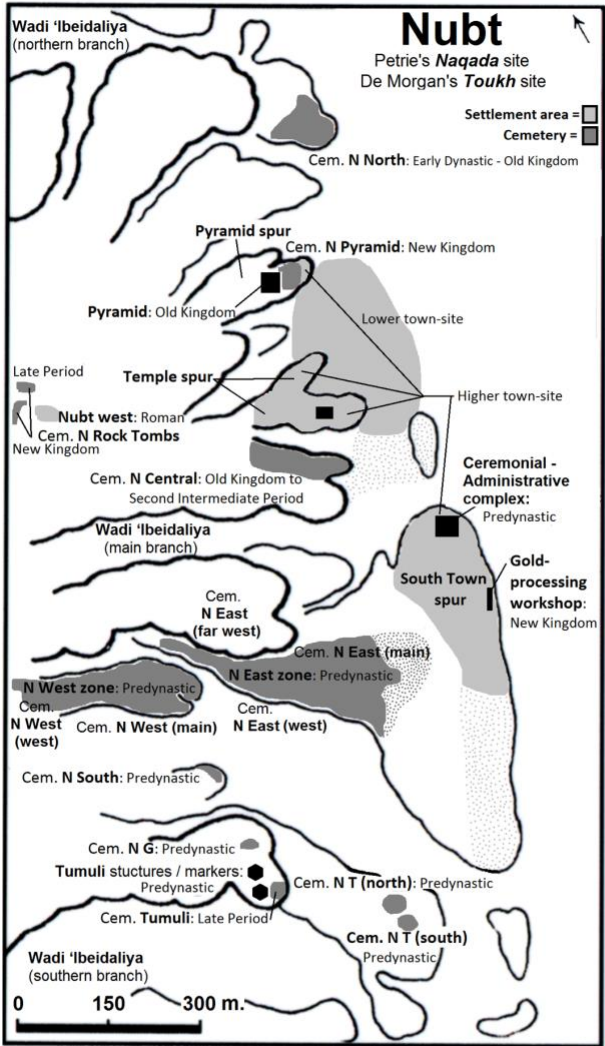
Figure 1: Nile Valley between Luxor and Dendera with inset: west bank of the Naqada Region.



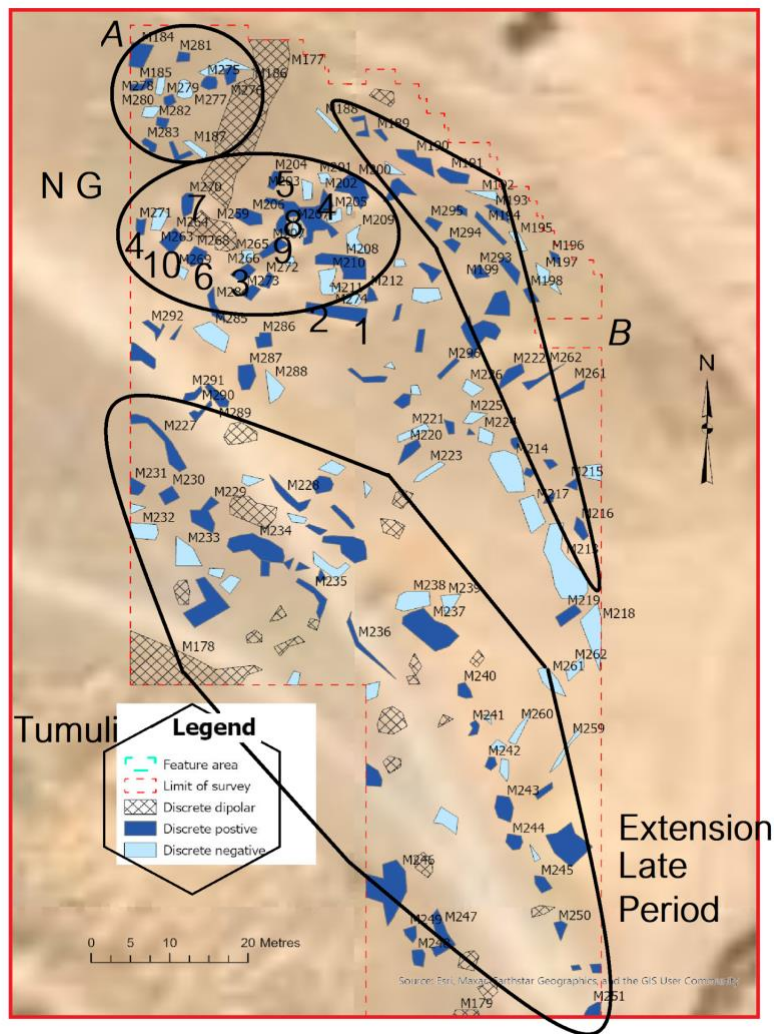
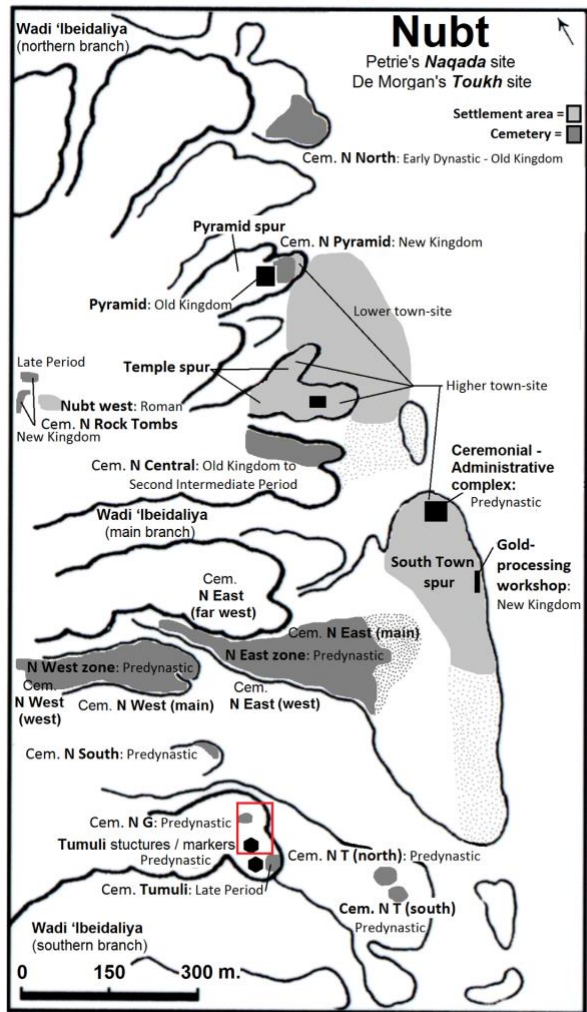
**Figure 2:** Site map of Manshiya Kh3, showing the urban and funerary zones (based on the 1970s excavations by Fekri Hassan and his team) where we carried out rescue operations in 2018 and 2022.



**Figure 3:** Site map of Naqada South, with marked in red the excavation area of 2022 and marked in blue, the path that bisects the ancient cemetery and which we want to investigate in 2023-24.



**Figure 4:** Site map of Nubt, showing in red the areas discussed in the text where archaeological remains are still accessible.



**Figure 5:** *Figure 5: Nubt's Tumuli area, geophysical survey result. This shows that geophysical results are not clear cut, with the graves of N G clearly visible on the surface (and thus difficult to incorporate into sub-surface investigation) unlike the features around that are not visible on the surface (and can be detected). The southern features may have been an extension of the Late Period Cemetery Tumuli (or due to presence of a road, modern anomalies), and areas A and B may be archaeological features or modern anomalies).*

**Credits**

**Figure 1:** main map, created by J. van Wetering based on *Tactical Pilotage Charts / TPC* (available online), and inset map, created by F.A. Hassan (1980s), revised by J. van Wetering, and digitised by W. Grajetzki (for *The Many Histories of Naqada*).

**Figure 2:** map created by F.A. Hassan (1980s) and revised by J. van Wetering.

**Figure 3:** map created by J. de Morgan (1896), with additions by J. van Wetering.

**Figure 4:** Google Earth base map, with additions by J. van Wetering, and inset map created by W. Kaiser (1961), revised by J. van Wetering, and digitised by W. Grajetzki (for *The Many Histories of Naqada*).

**Figure 5:** Geophysical map created by D. Barker and K. Strutt, for inset map see figure 4.