

Ancient Egyptian art work

by

Aziza Janssens

Water colours



The "Princesses fresco", daughters of Akhenaten and Nefertiti (Neferneferuaten and Neferneferure), Amarna 1353 - 1335 BC (now in the Ashmolean Museum, Oxford).

830 x 690 mm

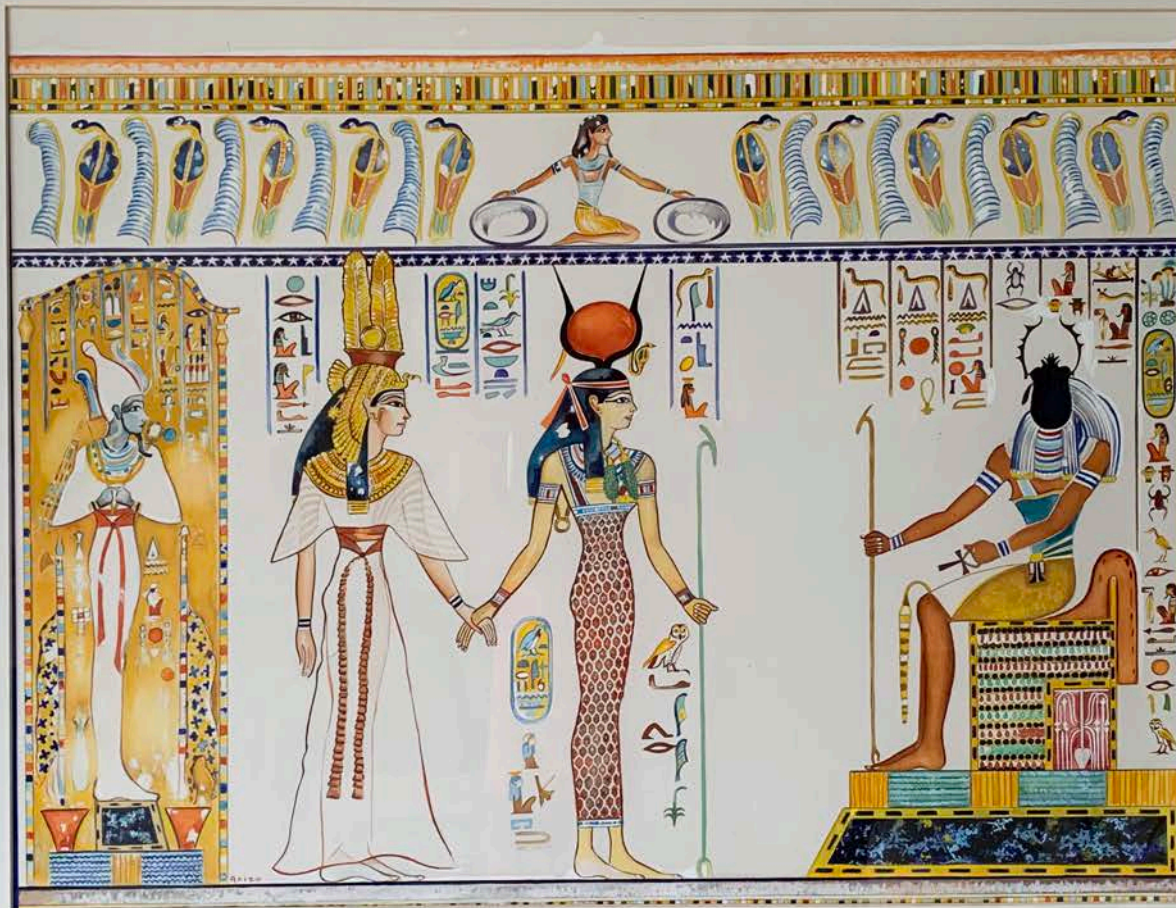
Price
£750

Banquet scene from the tomb of
Nakht, with three musicians, ca
1400-1380 BCE



830 x 690 mm

Price
£750



Queen Nefertari (meaning "beautiful companion") being led by Isis. On the right is the Egyptian god Khepri. Wall painting in the tomb of Queen Nefertari (first wife of Ramesses II, 1303-1213 BC)

830 x 690 mm

Price
£750



Front side panel of outer coffin of Djehutynakht, local governor, middle kingdom (2010-1961 BC)

This scene depicts a vast array of offerings, and at the lower left sits Djehutynakht receiving an offering of incense from Djehutynakht.

830 x 690 mm

Price
£750

Fresco decorating the tomb of Amenemopet known as Ipy, Thebes representing fishermen with a net, ca. 1295-1213 BCE. (Cairo Museum)



830 x 530 mm

Price
£650

Nebamun a nobleman hunting in the marshes of the Nile with his daughter and wife. From the wall of the tomb-chapel of Nebamun near Thebes Egypt dated to around 1375 BC.



830 x 530 mm

Price
£650

A funerary procession, possibly from in the book of the dead (from the Papyrus of Ani, 19th Dynasty, ca. 1250 BCE).



830 x 530 mm

Price
£650

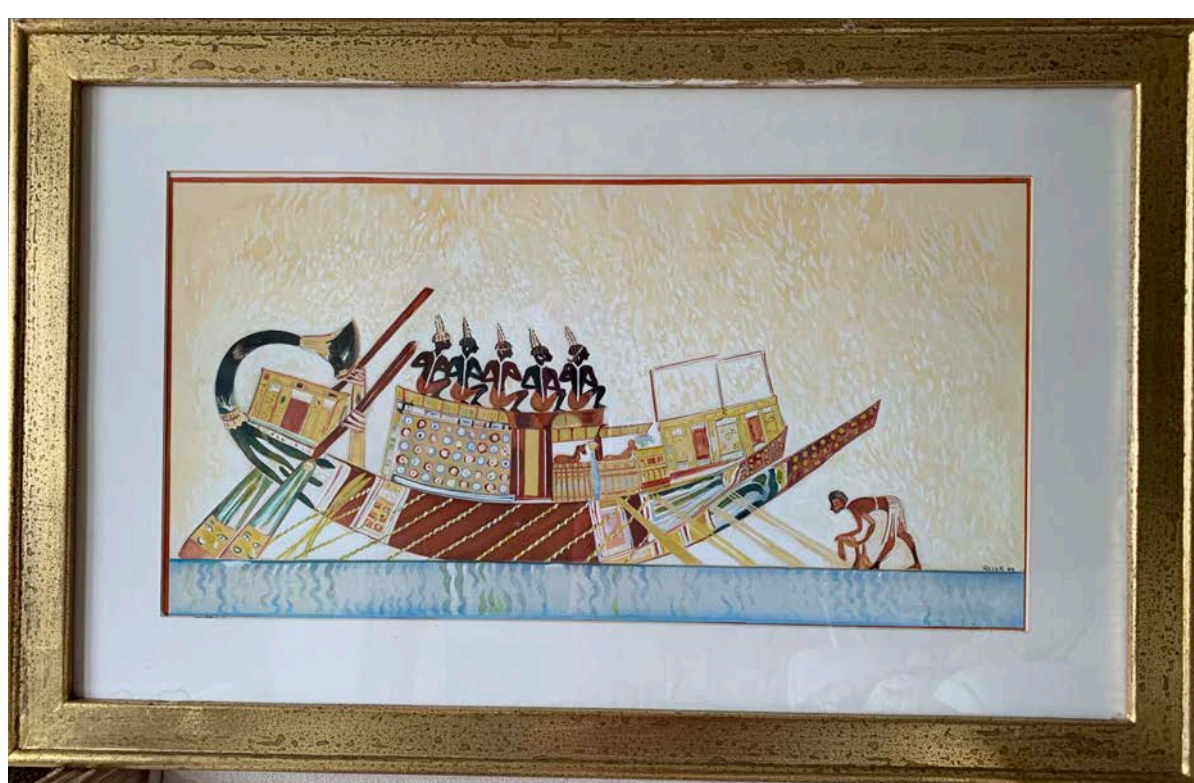
On the right, female mourners at the tomb of Vizier Ramose, Thebes. In the Ashmolean Museum, Oxford. Ramose was vizier first to Amenhotep III, then to Akhenaten.



830 x 530 mm

Price
£650

The grand arrival of Nubian
tribute during the reign of
Tutankhamun.
From the tomb of Amenhotep
Huy.



830 x 530 mm

Price
£650

From the tomb of Menna,
official overseer of the fields of
Amun.
Tomb is located opposite
Luxor on the west bank of the
Nile and dated to the reign of
Thutmosis IV



830 x 530 mm

Price
£650

Chariot scene from the tomb of Tutankhamun, around 1320 BC



830 x 530 mm

Price
£650

From the tomb of Userhat in the reign of Amenhotep II, ca 1420 BCE



830 x 530 mm

Price
£650

Nubian tribute to Pharaoh
Tutankhamun in the tomb of Huy
(fan-bearer of the king), ca 1330
BCE.

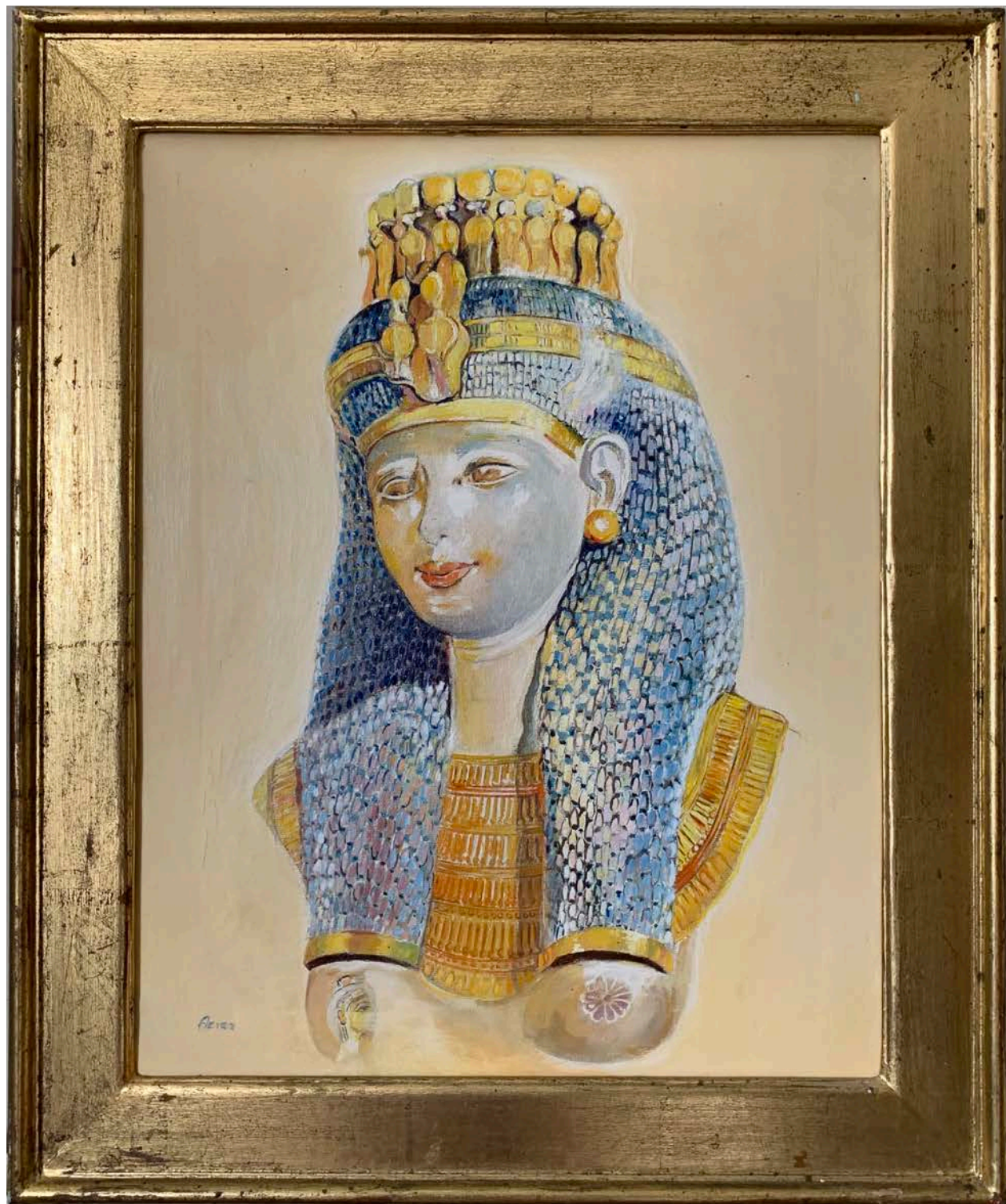


830 x 530 mm

Price
£650

Oil paintings

The statue was often called “the White Queen” until a foundation trench sunk near a road at Akhmin happened to reveal an identical statue - but ten times the size of the same queen - flanking a colossal statue of Ramesses II. Youthful grace, a gentle smile and well-preserved colour all mark this statue as one of the most beautiful of the Rameside period.



Queen Merit-Amon, daughter of Ramesses II

620 x 520 mm

Price
£700

Tutankhamun with his wife, Ankhesenamun (daughter of Nefertiti and Akhenaten) walking in the garden, New Kingdom, Dynasty 18, around 1330 BCE.



830 x 600 mm

Price
£750

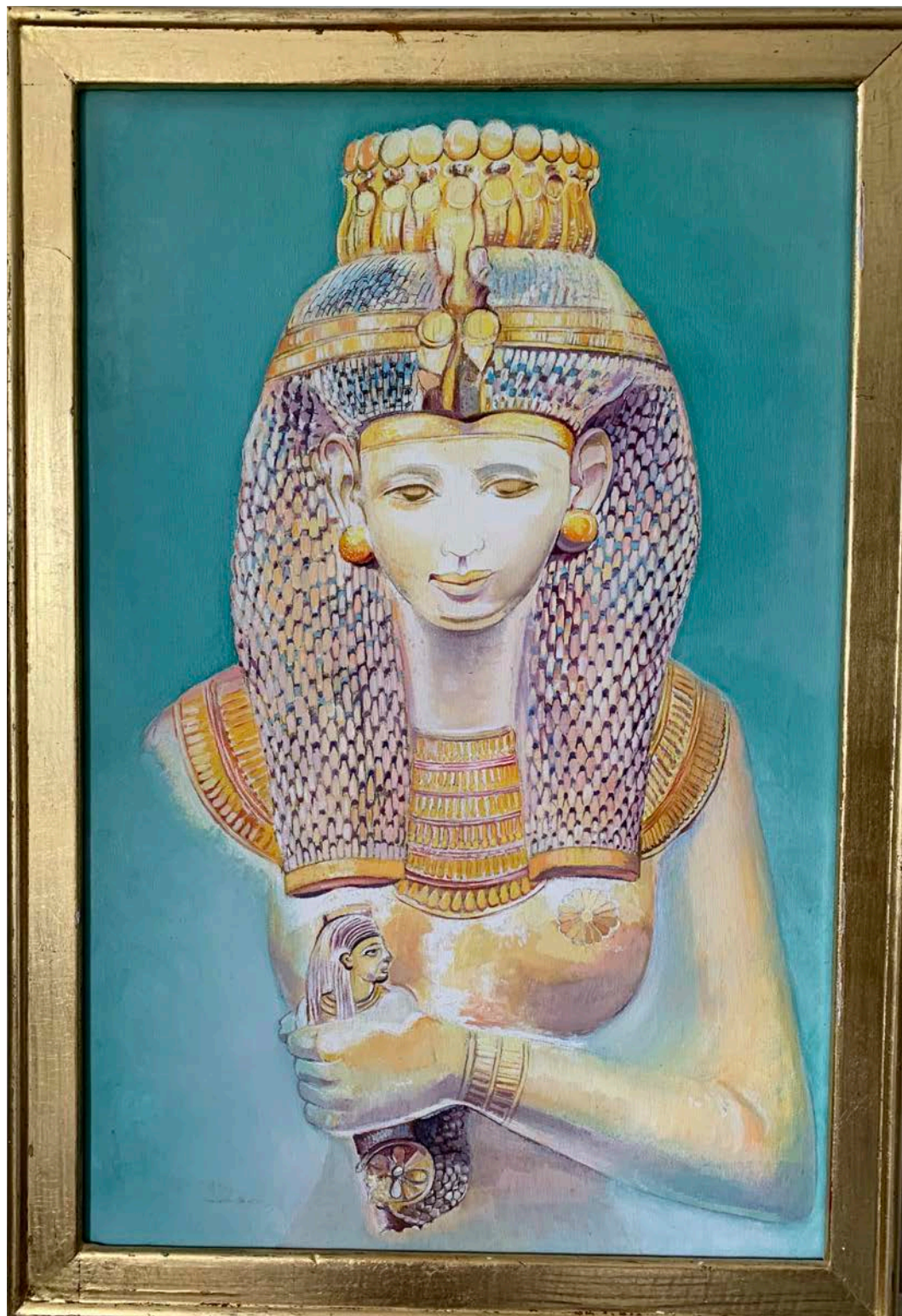
From the tomb of Userhat,
middle of the 18th Dynasty.
Probably Userhat's wife,
Hatshepsut.



620 x 520 mm

Price
£650

Queen Meritamen, daughter of
Ramesses II and Nefertari.



830 x 570 mm

Price
£750

The Goddess Hathor
Dynasty XIX



560 x 460 mm

Price
£600



From the private tomb of Menna (West Bank at Luxor) showing Menna, his wife and sons, 18th Dynasty, king Thutmosis IV

920 x 610 mm

Price
£500



Tutankhamun on his war chariot battling with Egypt's enemies.

620 x 480 mm

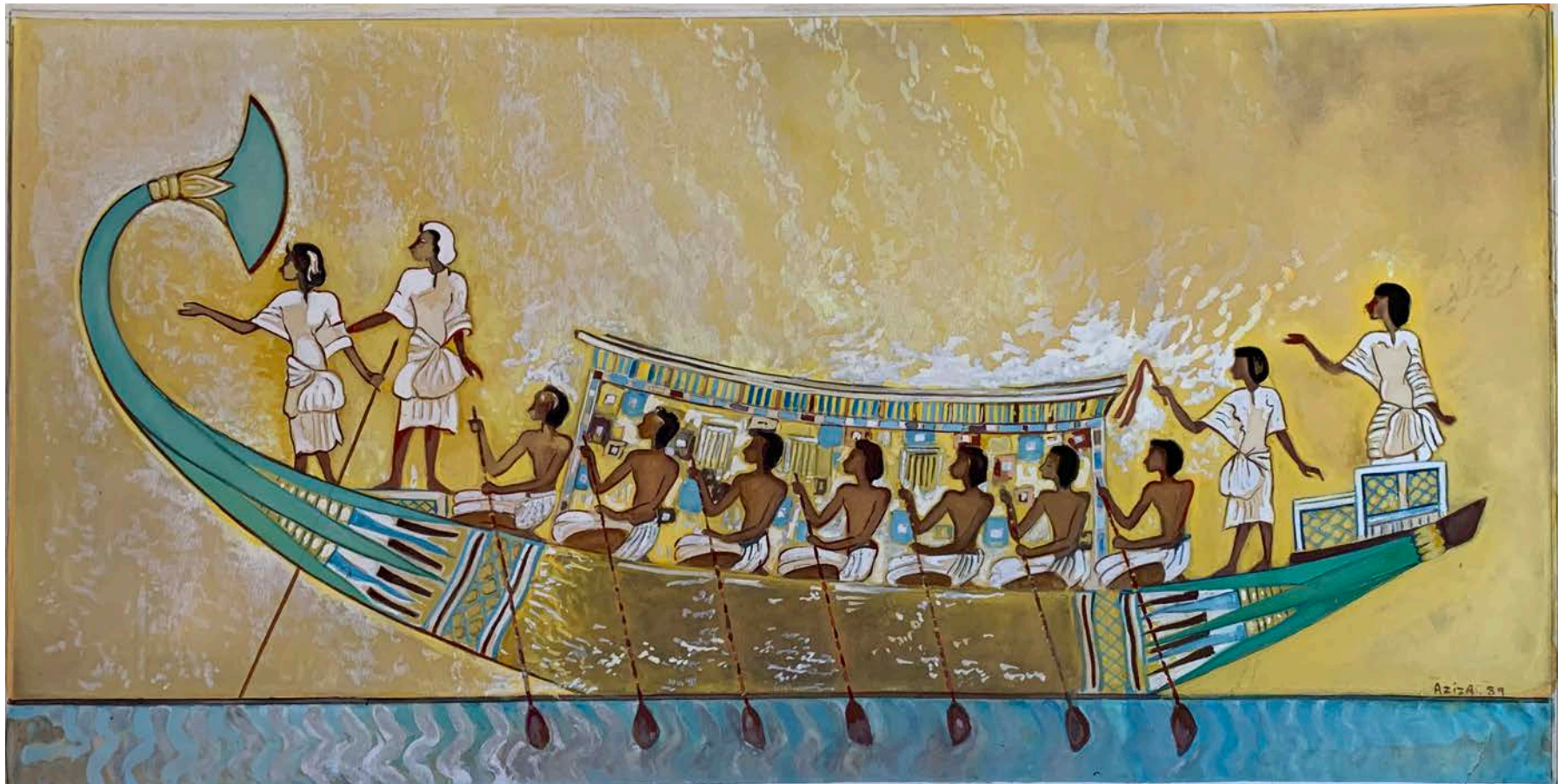
Price
£700



The back of Tutankhamun's throne showing the young king and his wife, Queen Ankhesenamun.

620 x 460 mm

Price
£700



From the Egyptian Book of the Dead

620 x 320 mm

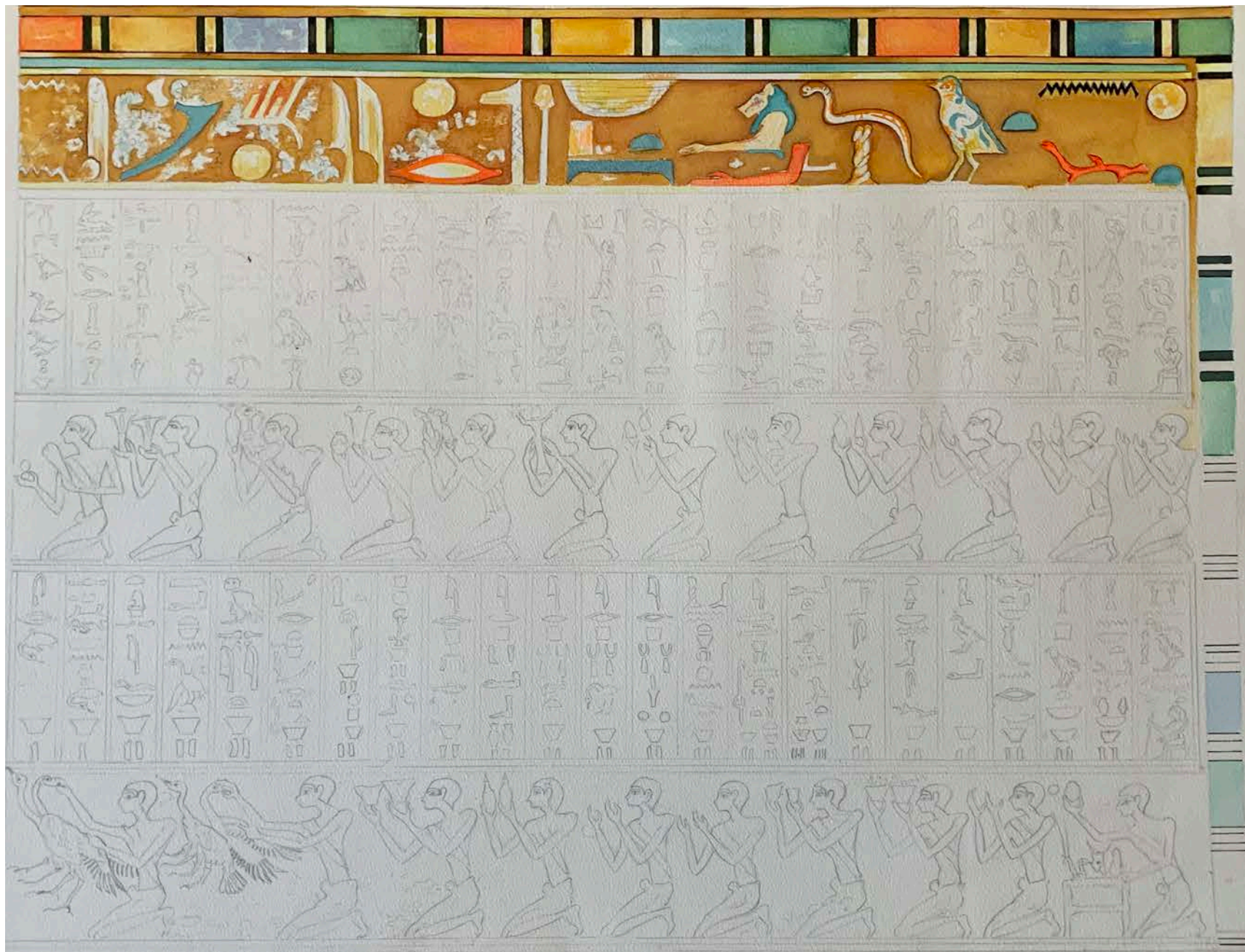
Price
£600



Ancient Egyptian vulture goddess Nekhbet,
necklace from Tutankhamun's tomb.

630 x 470 mm

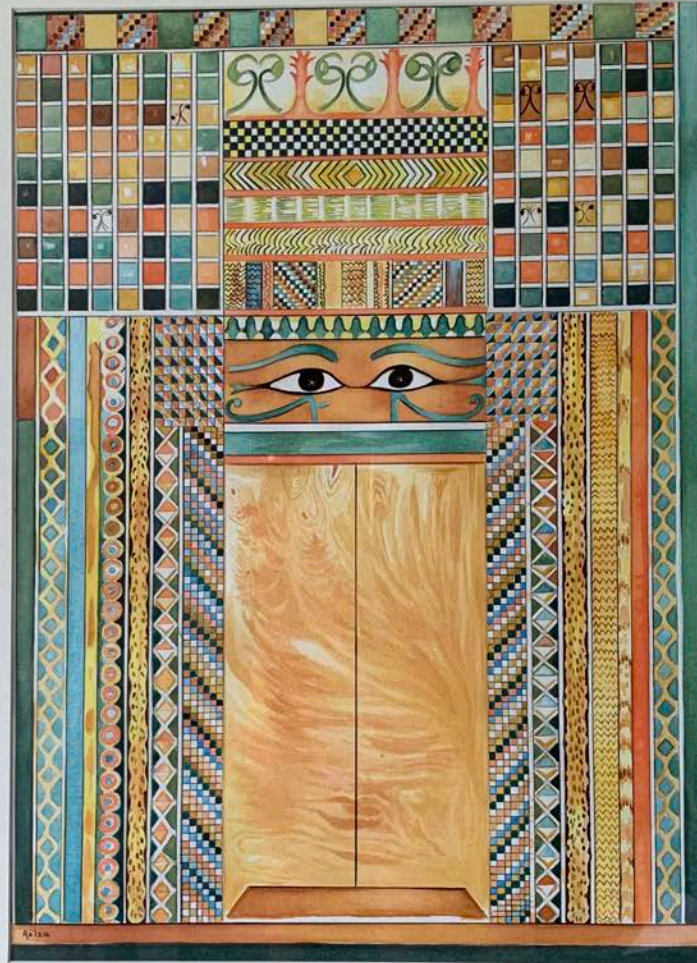
Price
£500



unfinished, watercolour

620 x 480 mm

False door from the tomb of
Egyptian governor
Djehutynakht and his wife, at
Deir el-Bersha; ca. 2000 BCE.



620 x 775 mm

Price
£550



Possibly from a Ramses Wissa Wassef textile

690 x 540 mm

Price
£550